

DATE:
07/04/2015

SCALE:
1:2 @ A3

ISSUE:
No: 002

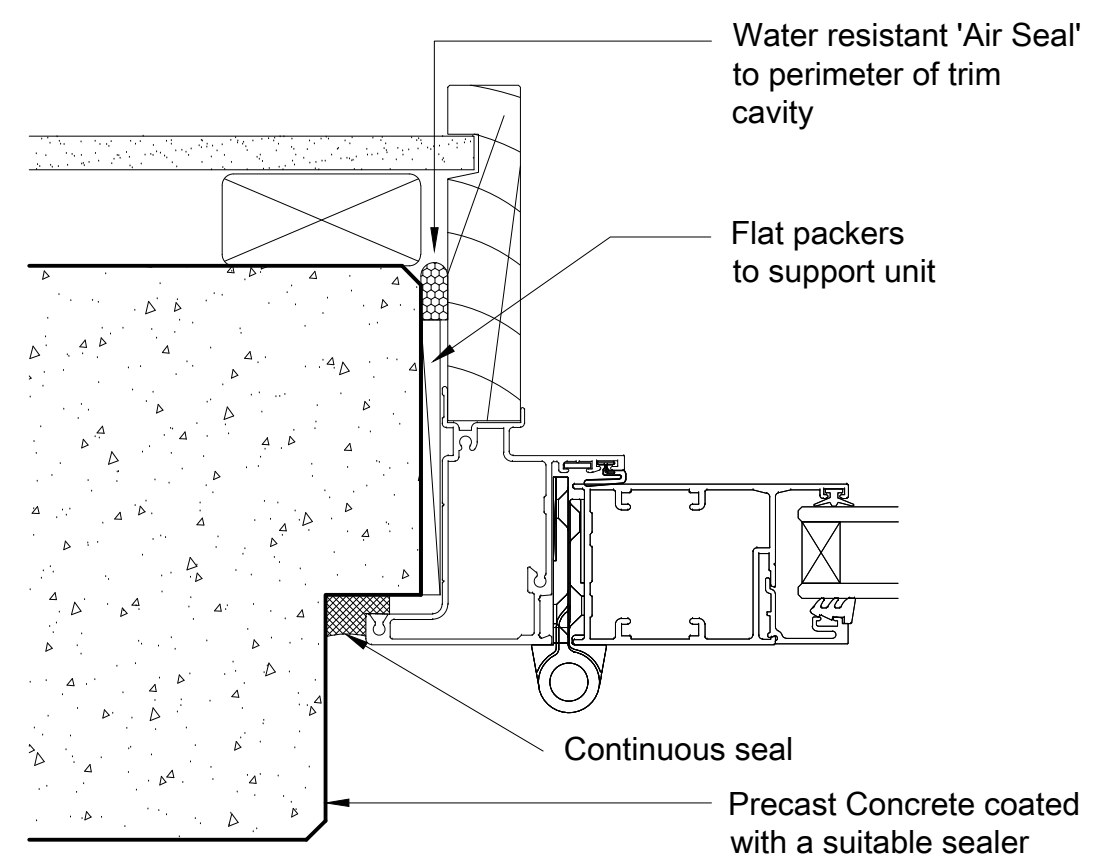
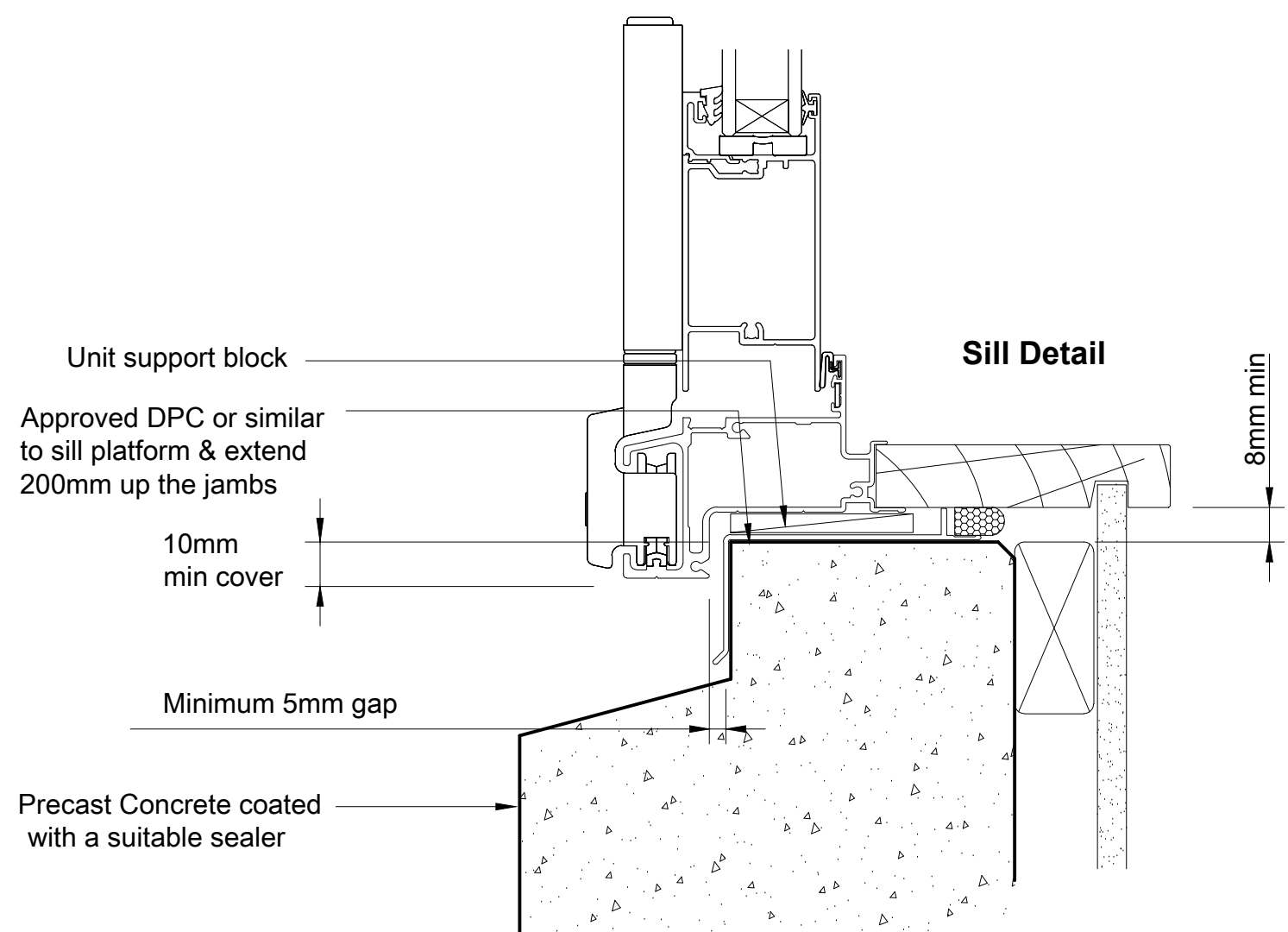
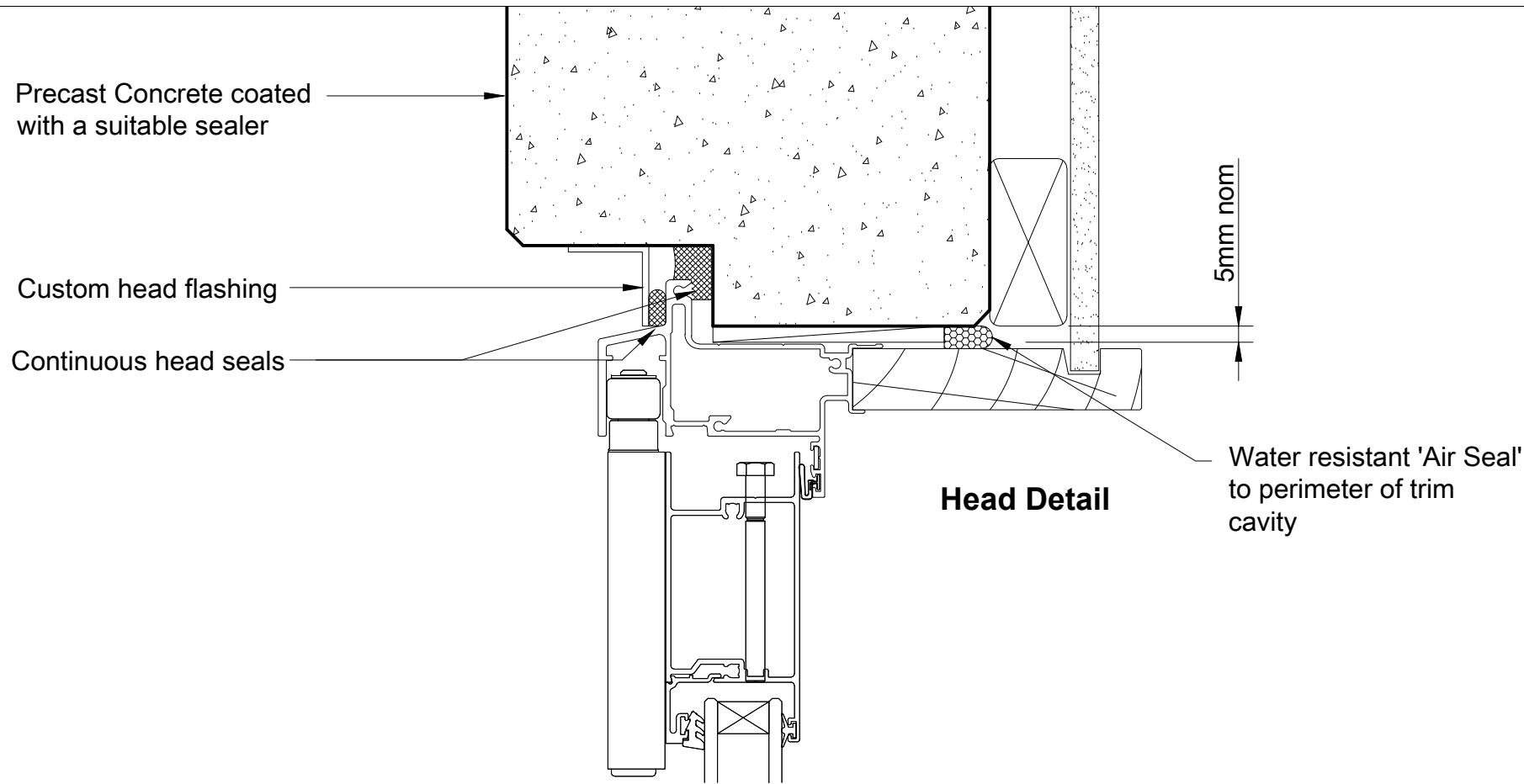
**WANZ WIS DIRECT FIX
PRECAST CONCRETE - AWNING WINDOW**

Page : dfPCPaw

OMEGA Windows & Doors Ltd.
36 Paraiti Road, Bell Block
Private Bag 2007
New Plymouth 4342
TEL: 0800 500 141
FAX: +64 6 755 9381
www.omegawindows.co.nz



This document is intended as a guide only and is to be used in conjunction with The WANZ Guide to Window Installation as described in E2/AS1 Amendment 5 (see link below)
<http://www.wanz.org.nz/download/WANZ%20Guide%20to%20E2%20AS1%20Amd%206%20V1.3%20Dec%202014.pdf>



DATE:
07/04/2015

SCALE:
1:2 @ A3

ISSUE:
No: 002

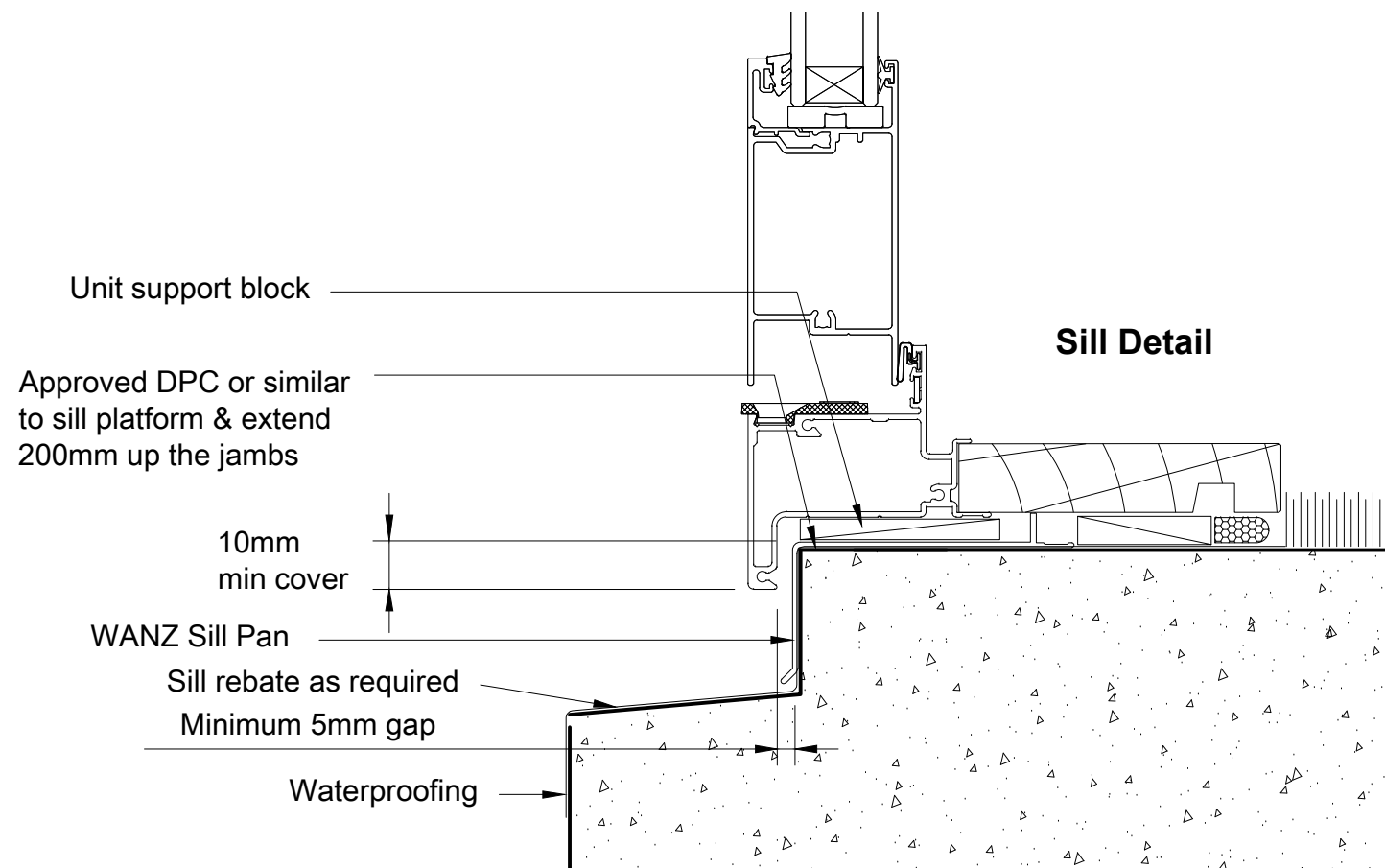
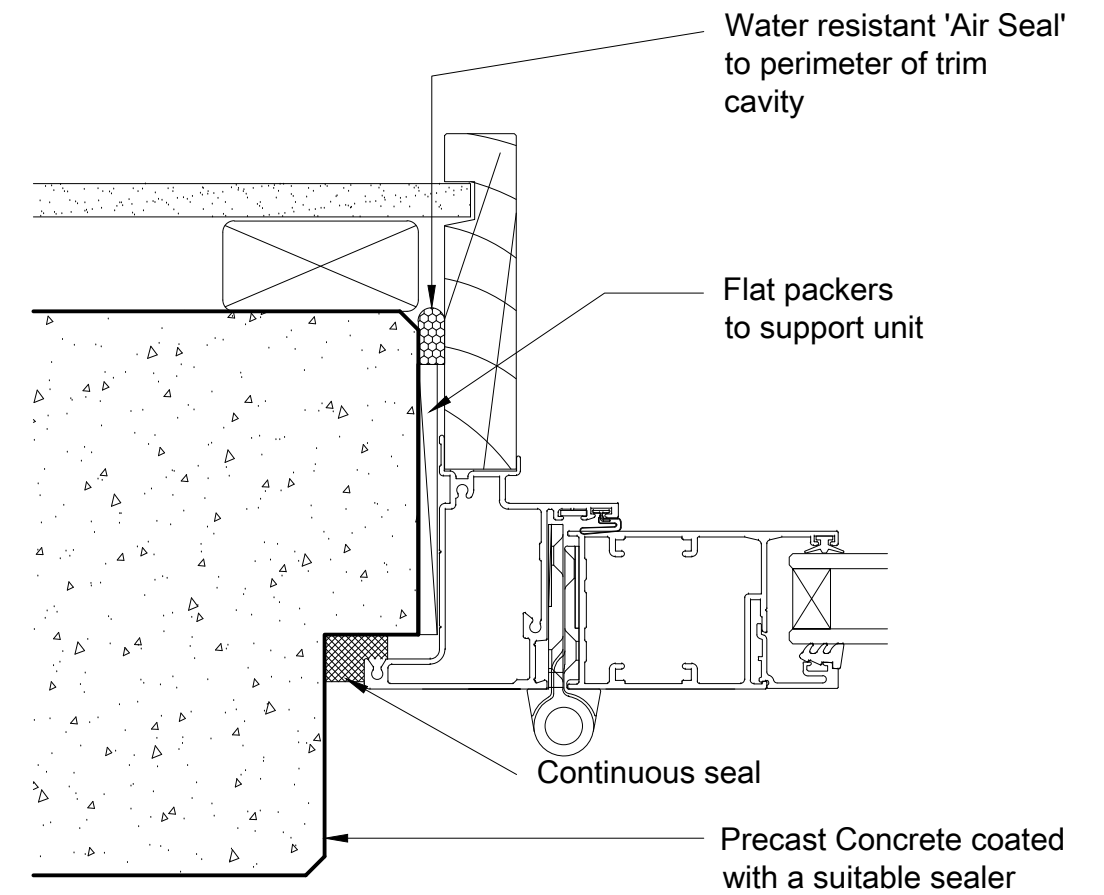
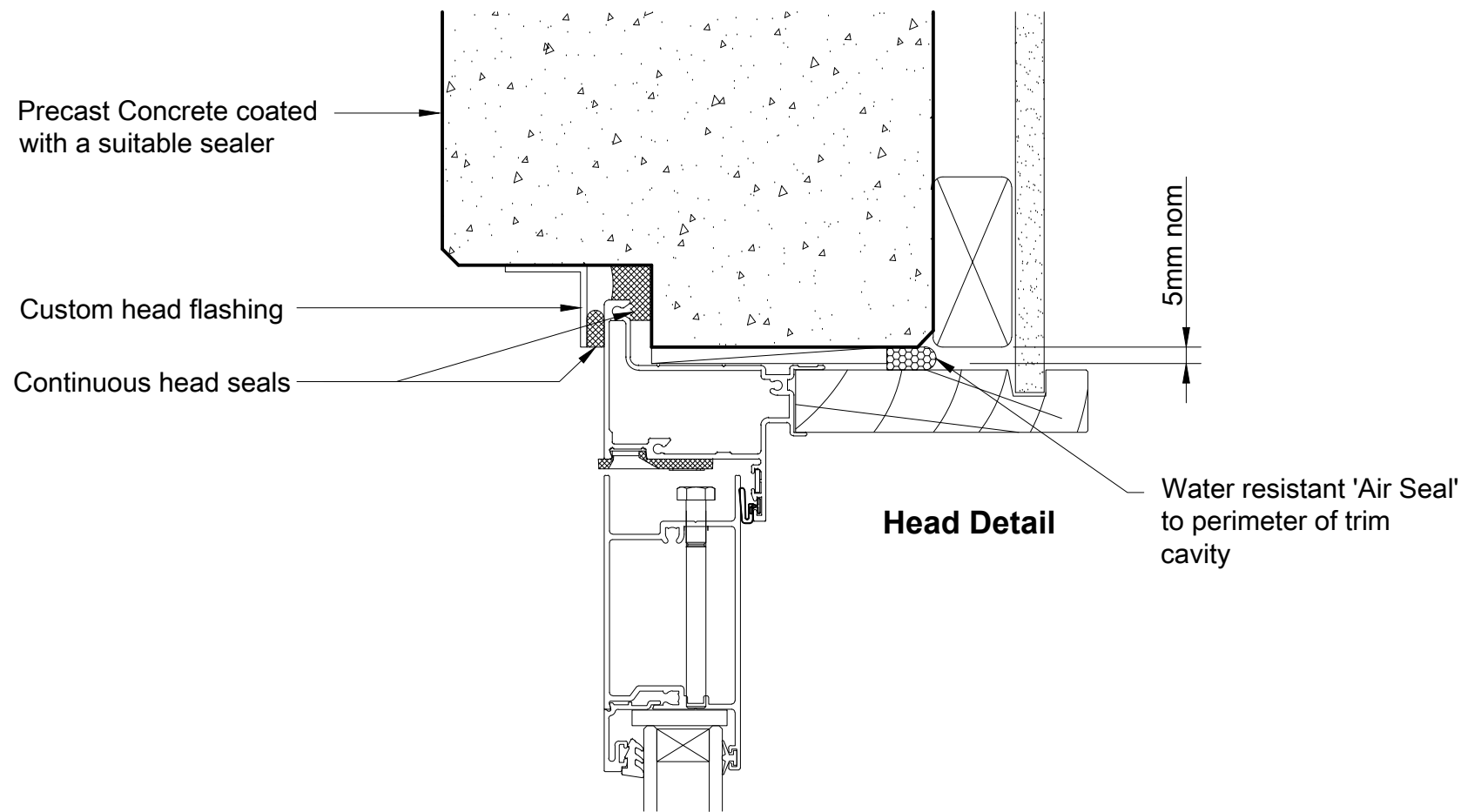
**WANZ WIS DIRECT FIX
PRECAST CONCRETE - BI FOLD WINDOW**

Page : dfPCPbw

OMEGA Windows & Doors Ltd.
36 Paraiti Road, Bell Block
Private Bag 2007
New Plymouth 4342
TEL: 0800 500 141
FAX: +64 6 755 9381
www.omegawindows.co.nz



This document is intended as a guide only and is to be used in conjunction with The WANZ Guide to Window Installation as described in E2/AS1 Amendment 5 (see link below)
<http://www.wanz.org.nz/download/WANZ%20Guide%20to%20E2%20AS1%20Amd%206%20V1.3%20Dec%202014.pdf>



Jamb Detail



DATE:
07/04/2015

SCALE:
1:2 @ A3

ISSUE:
No: 002

**WANZ WIS DIRECT FIX
PRECAST CONCRETE - HINGED DOOR**

Page : dfPCPhd

OMEGA Windows & Doors Ltd.
36 Paraiti Road, Bell Block
Private Bag 2007
New Plymouth 4342
TEL: 0800 500 141
FAX: +64 6 755 9381
www.omegawindows.co.nz



Precast Concrete coated with a suitable sealer

Custom head flashing

Continuous head seals

5mm nom

Water resistant 'Air Seal' to perimeter of trim cavity

Head Detail

Unit support block

Approved DPC or similar to sill platform & extend 200mm up the jambs

Sill Detail

10mm min cover

WANZ Sill Pan

Sill rebate as required

Minimum 5mm gap

Waterproofing

Water resistant 'Air Seal' to perimeter of trim cavity

Flat packers to support unit

Continuous seal

Precast Concrete coated with a suitable sealer

Jamb Detail



DATE:
07/04/2015

SCALE:
1:2 @ A3

ISSUE:
No: 002

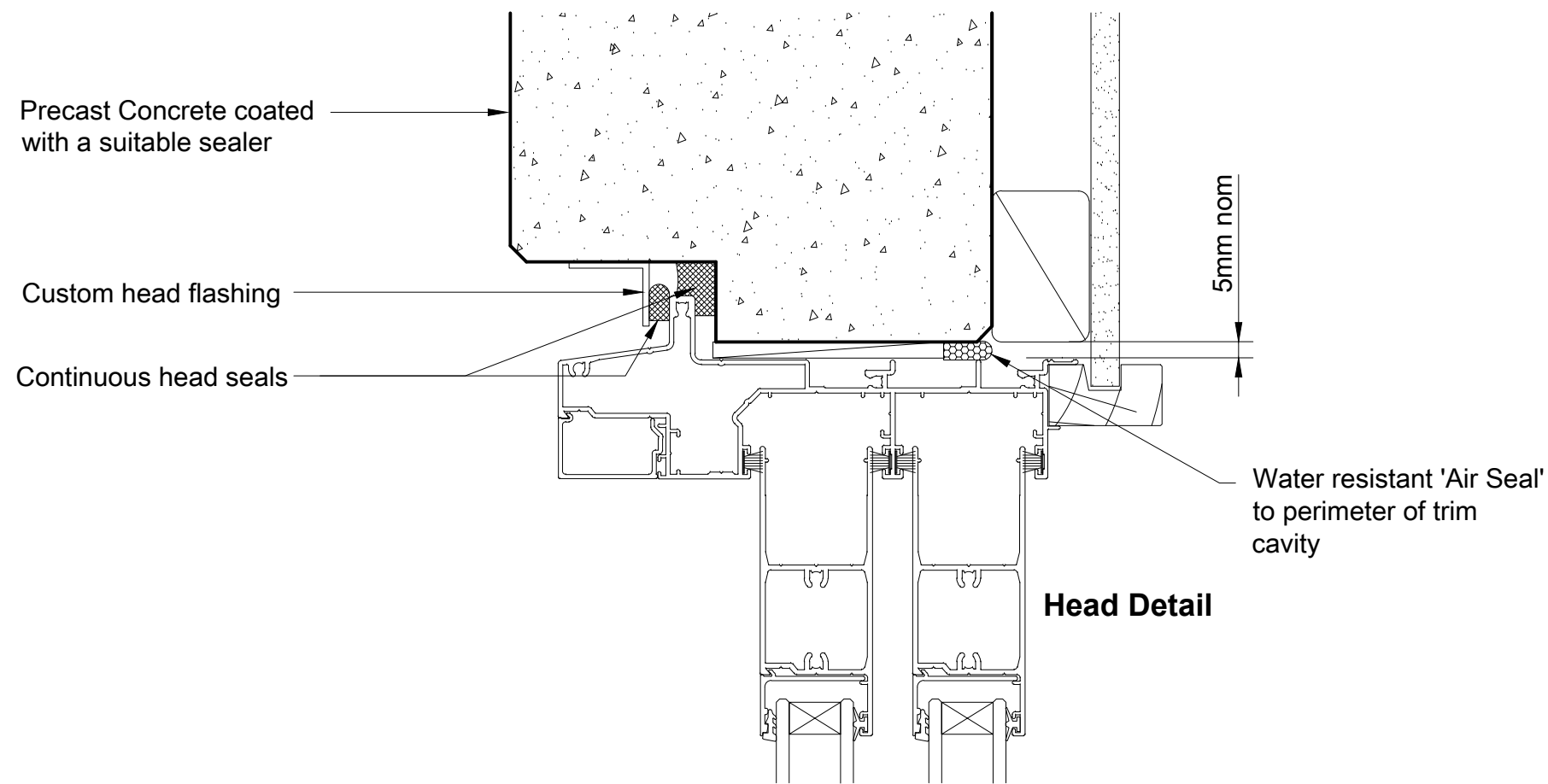
WANZ WIS DIRECT FIX PRECAST CONCRETE - SLIDING DOOR

Page : dfPCPslid

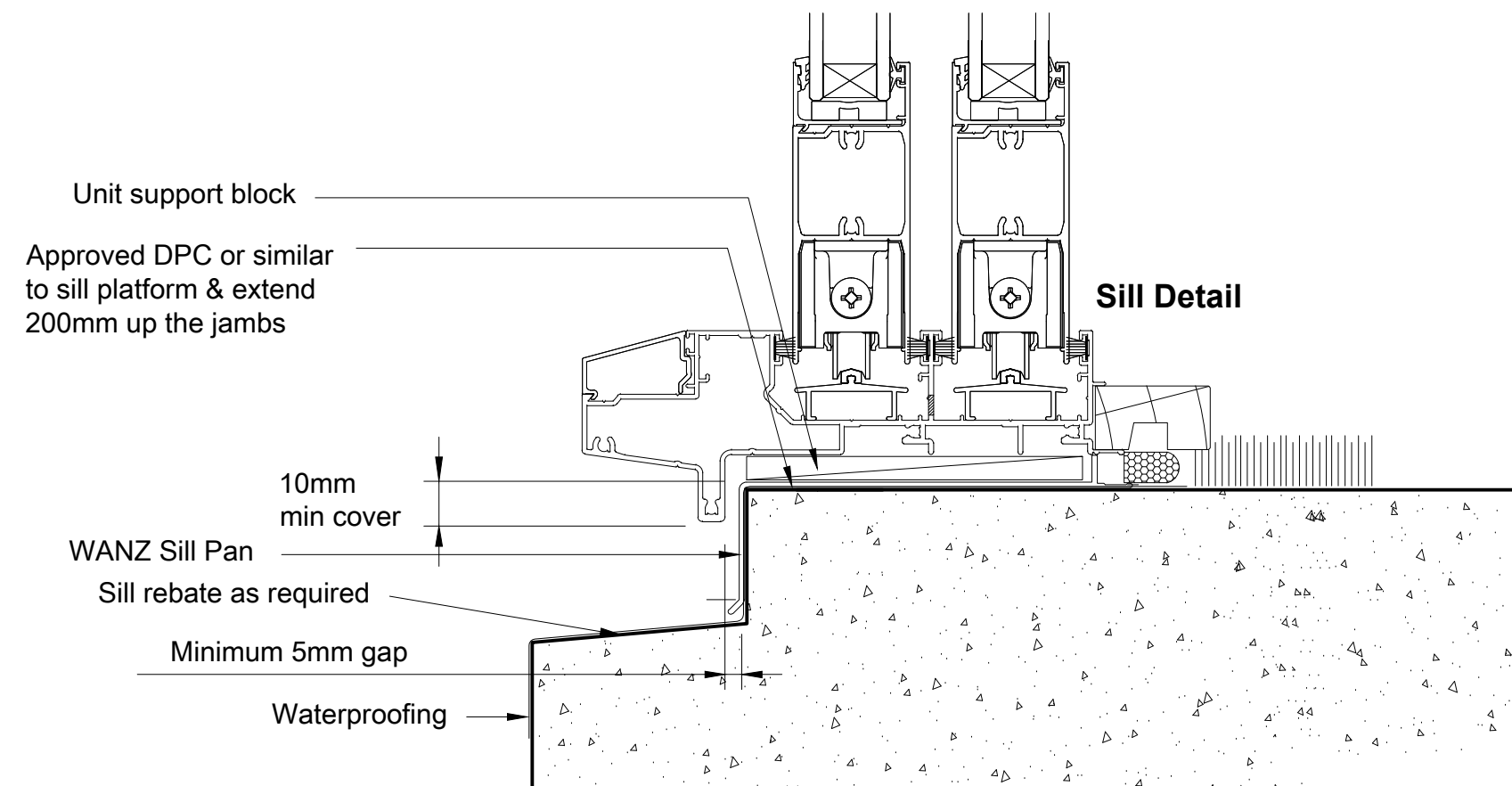
OMEGA Windows & Doors Ltd.
36 Paraiti Road, Bell Block
Private Bag 2007
New Plymouth 4342
TEL: 0800 500 141
FAX: +64 6 755 9381
www.omegawindows.co.nz



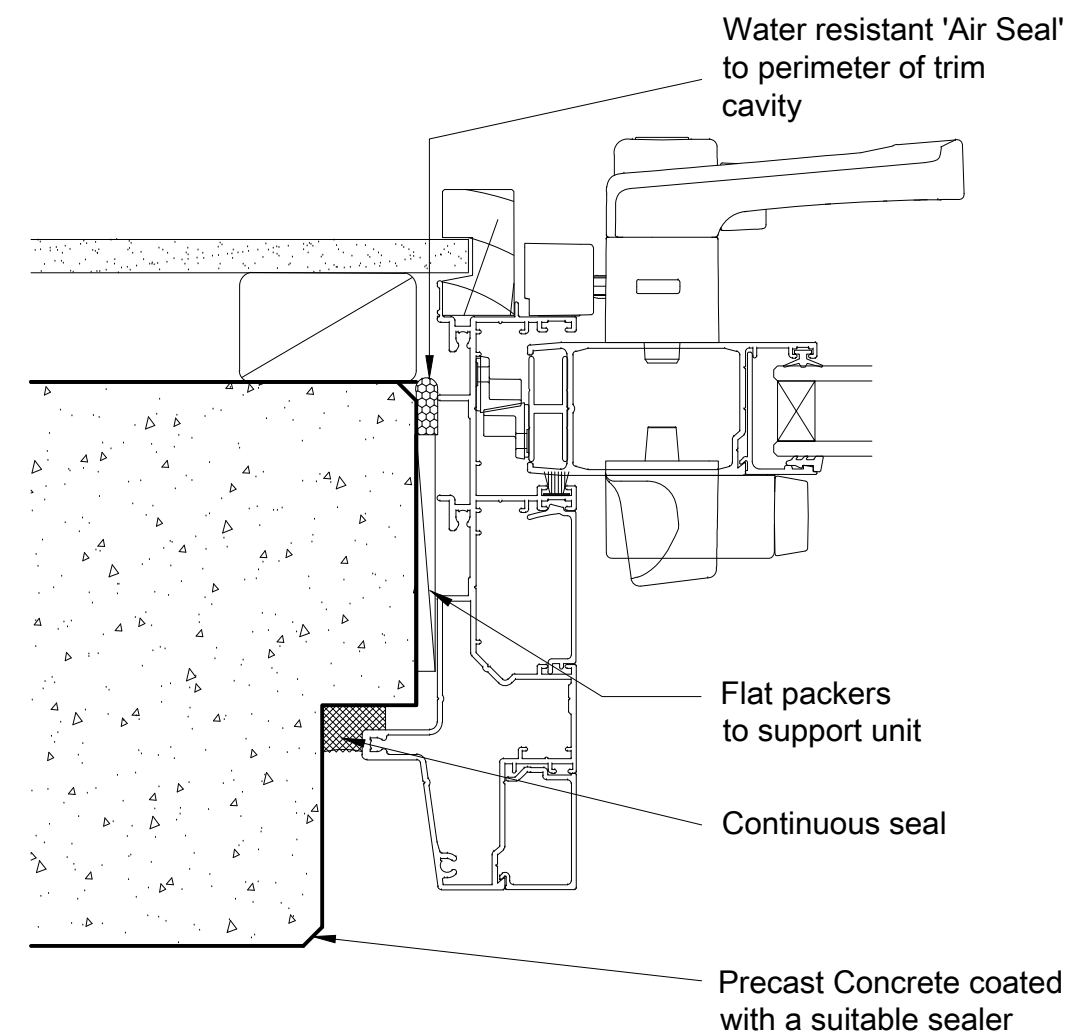
This document is intended as a guide only and is to be used in conjunction with The WANZ Guide to Window Installation as described in E2/AS1 Amendment 5 (see link below) <http://www.wanz.org.nz/download/WANZ%20Guide%20to%20E2%20AS1%20Amd%206%20V1.3%20Dec%202014.pdf>



Head Detail



Sill Detail



Jamb Detail

DATE:
07/04/2015

SCALE:
1:2 @ A3

ISSUE:
No: 002

WANZ WIS DIRECT FIX
PRECAST CONCRETE - STACKER DOOR

Page :dfPCPstk

OMEGA Windows & Doors Ltd.
 36 Paraitē Road, Bell Block
 Private Bag 2007
 New Plymouth 4342
 TEL: 0800 500 141
 FAX: +64 6 755 9381
 www.omegawindows.co.nz

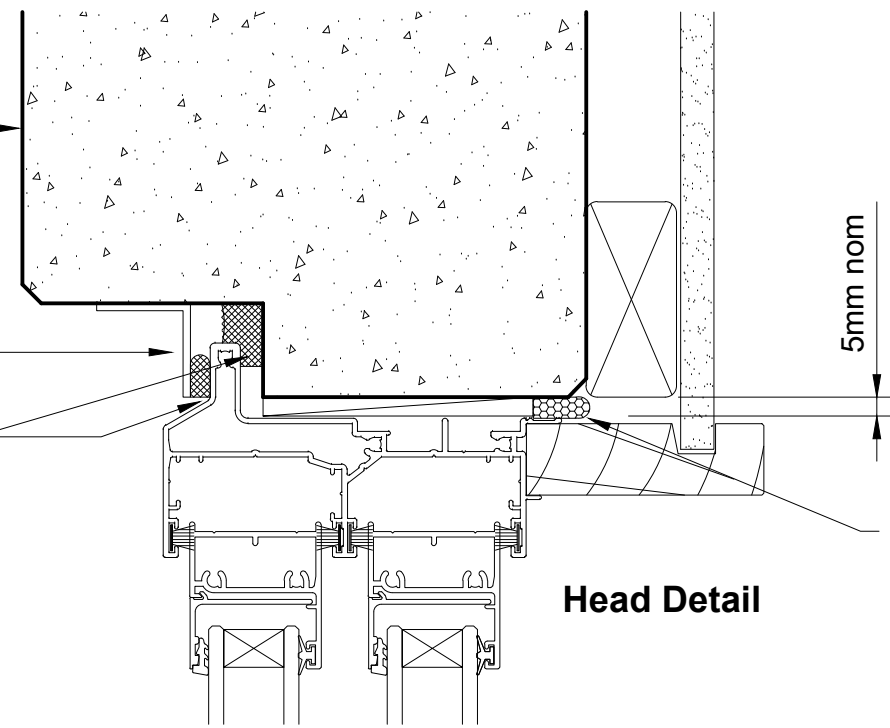


This document is intended as a guide only and is to be used in conjunction with
 The WANZ Guide to Window Installation as described in E2/AS1 Amendment 5 (see link below)
<http://www.wanz.org.nz/download/WANZ%20Guide%20to%20E2%20AS1%20Amd%206%20V1.3%20Dec%202014.pdf>

Precast Concrete coated with a suitable sealer

Custom head flashing

Continuous head seals



5mm nom

Water resistant 'Air Seal' to perimeter of trim cavity

Head Detail

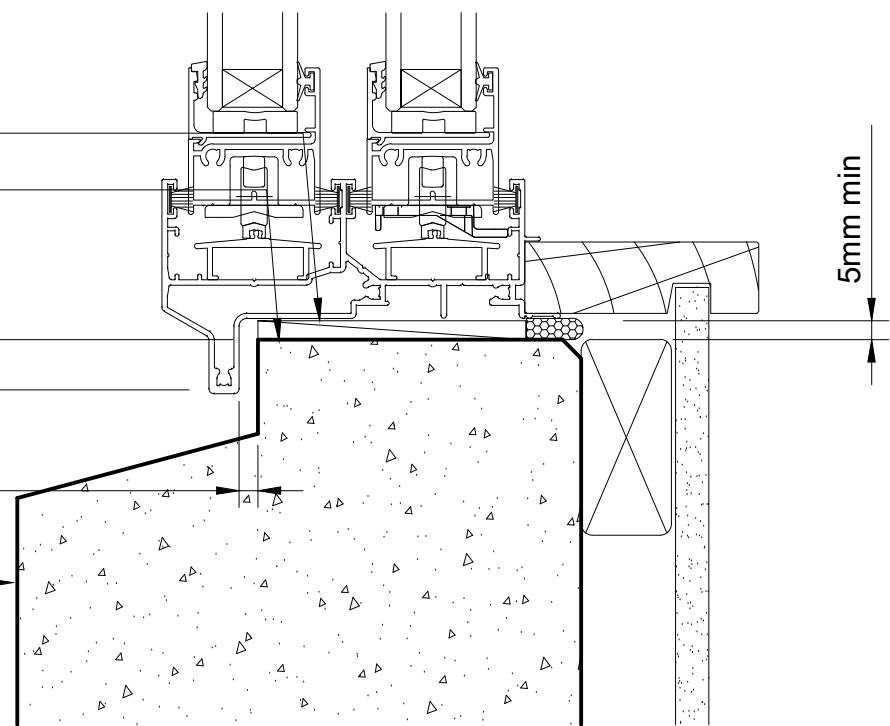
Unit support block

Approved DPC or similar to sill platform & extend 200mm up the jambs

10mm min cover

Minimum 5mm gap

Precast Concrete coated with a suitable sealer



5mm min

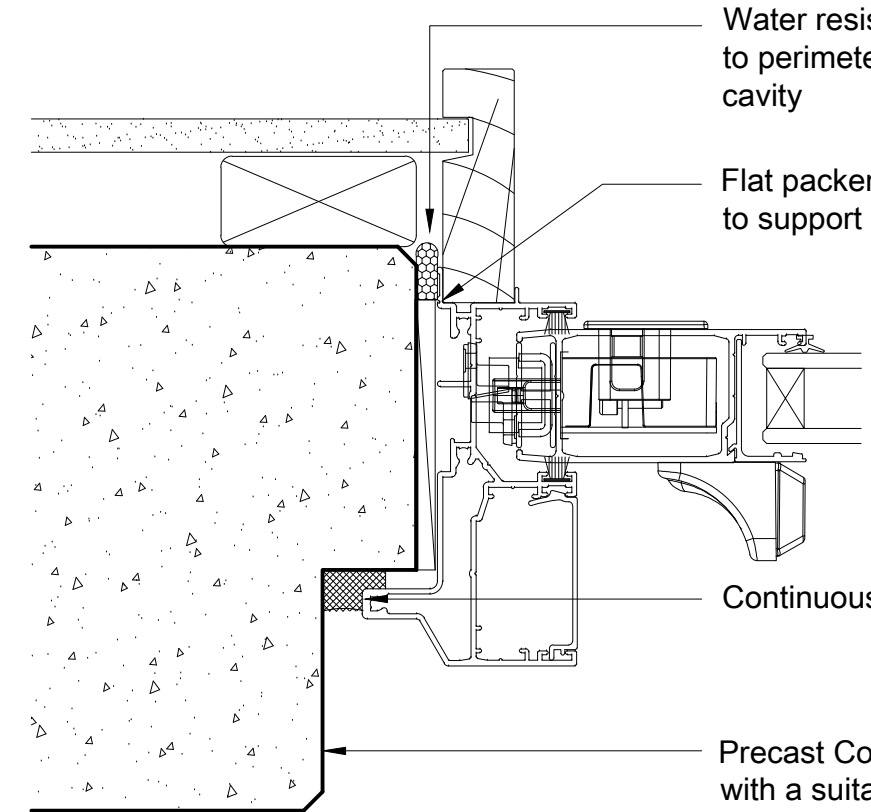
Sill Detail

Water resistant 'Air Seal' to perimeter of trim cavity

Flat packers to support unit

Continuous seal

Precast Concrete coated with a suitable sealer



Jamb Detail



DATE:
07/04/2015

SCALE:
1:2 @ A3

ISSUE:
No: 002

WANZ WIS DIRECT FIX PRECAST CONCRETE - SLIDING WINDOW

Page : dfPCPsw

OMEGA Windows & Doors Ltd.
36 Paraiti Road, Bell Block
Private Bag 2007
New Plymouth 4342
TEL: 0800 500 141
FAX: +64 6 755 9381
www.omegawindows.co.nz



This document is intended as a guide only and is to be used in conjunction with The WANZ Guide to Window Installation as described in E2/AS1 Amendment 5 (see link below) <http://www.wanz.org.nz/download/WANZ%20Guide%20to%20E2%20AS1%20Amd%206%20V1.3%20Dec%202014.pdf>